

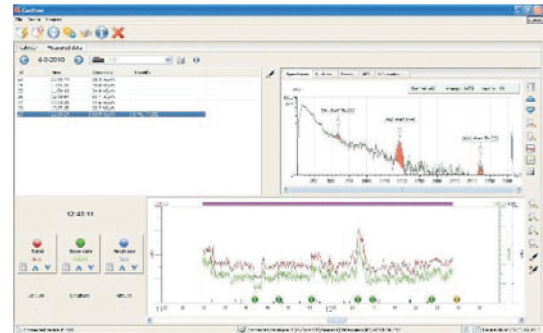
Universal Software Package

GEORADIS

GeoView

To support the administrative and recording requirements for many applications Georadis introduces the software package GeoView. Making a report has never been easier using this universal user interface.

Depending on the instrument, GeoView provides detailed views on collected data such as survey data in both cps and dose rate, detailed spectrum view of stored spectra and actual analysis results of isotope identification. User comments can be added to the measured data by using the built-in active notepad. All information is easily exported and then used in external software packages like Google Earth to plot GPS information.



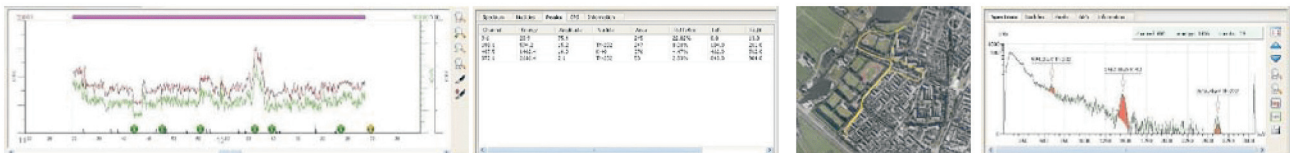
The universal connectivity of GeoView allows the download of stored information from any of the connected Georadis instruments via Bluetooth or USB. The SQL oriented database contains all downloaded information from all units in a structured manner and archiving of data was never easier. Multiple users are able to view the information stored in a shared database. In addition GeoView administrates and stores the instrument settings for each unit connected, making it easy to manage multiple instruments.

- **Spectrum view**
- **Identification results**
- **Peak Analysis**
- **Survey data**
- **Calendar based**
- **Export data to e.g. Google Earth**
- **Instrument administration**
- **Add comments**
- **Maintenance support**

When connected to the RT-30 series, GeoView also provides the user a detailed view on the spectrum and peaks used for identification. Found isotopes are listed, with relative intensity, in descending order.

GeoView also provides for maintenance assistance on the Georadis instruments and uploads instrument details and parameters to Georadis Service Centre via Internet. Georadis experts analyse amongst others the instrument LOGs to check instrument stabilization and behaviour. Modified settings are then send via Internet to GeoView and the user can then upload these parameters to the instrument.

GeoView is a versatile software package that is installed under Linux or Microsoft Windows operating system.



Specifications are subject to change without notice

GEORADIS

Production and service: GEORADIS s.r.o.
Novomoravská 321/41
619 00 Brno, CZ
Phone: +420 541 422 236
E-mail: info@georadis.com
Web: www.georadis.com

Distribution: